



UNIVERSAL CLIP

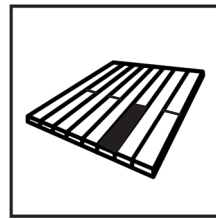
HYBRID
8-25


COBRA GLOBAL
DECKING
SYSTEM
FASTENER®

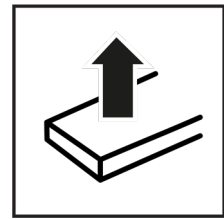


CLIP HYBRID 8-25

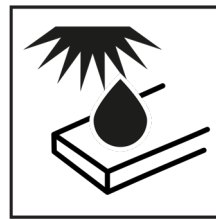
The benefits



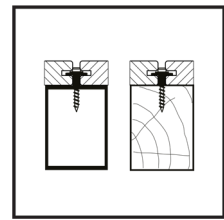
Can be dismantled locally



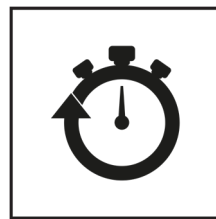
High tensile strength



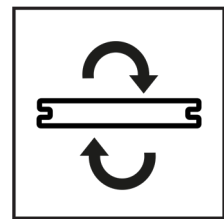
Absorbs decking movements



Fixing on wood and aluminium joists



Quick and easy to fit



Compatible with reversible blades
(20 to 26 mm x 150 mm max.)

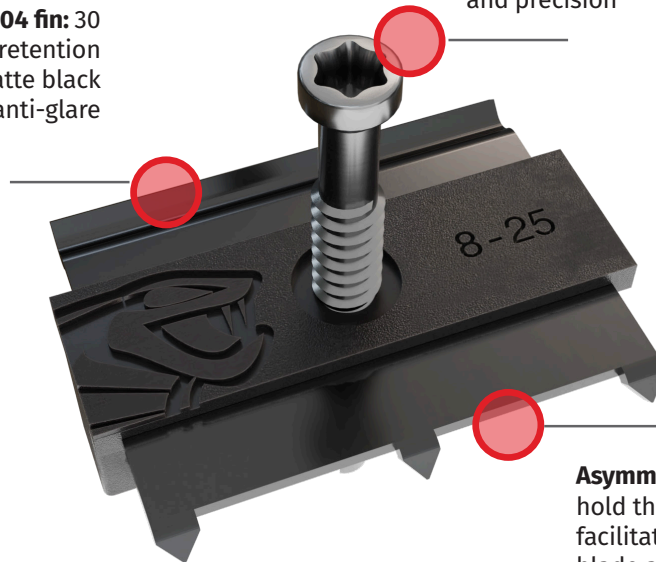
HYBRID 8-25, A BI-MATERIAL CLIP

Exclusive & Innovative

Stainless steel AISI 304 fin: 30 mm wide for optimal retention and 1.8 mm thick, matte black lacquered for anti-glare

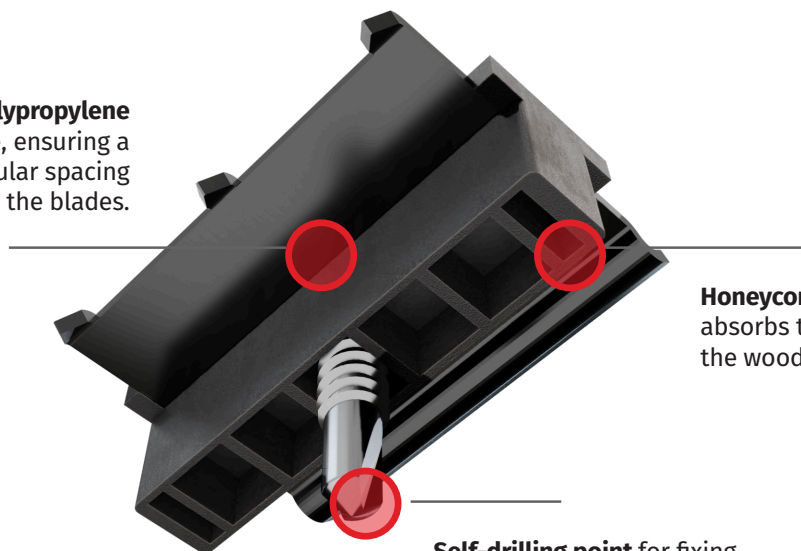
Factory-fitted **stainless steel screws** on the clip for quick and easy installation. Torx grip for comfort and precision


CERTIFIED
22 160 820.1



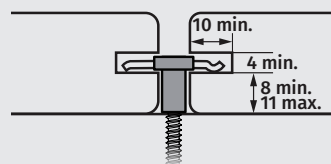
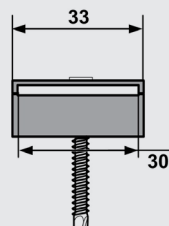
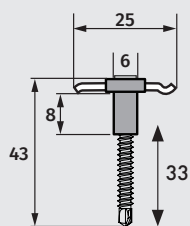
Asymmetrical clip: a clawed side to hold the blade firmly, a curved side to facilitate the positioning of the next blade and allow the wood to expand.

Black UV-resistant polypropylene body, 6mm wide, ensuring a suitable and regular spacing between the blades.



Honeycomb structure absorbs the swelling of the wood

Self-drilling point for fixing in wood or aluminium



ALUMINIUM



Min thickness
2mm

WOOD



Density max.
900 kg/m³

COBRA® HYBRID 8-25

Ideal for installation
exotic wood decking

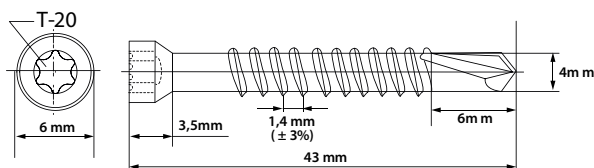


Inox AISI410

CLIP HYBRID 8-25 L

Screw characteristics

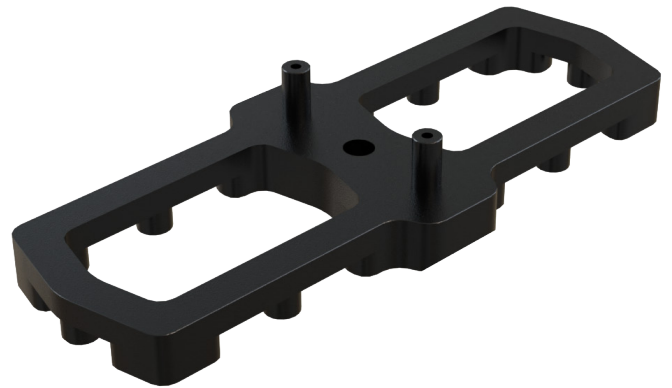
- 4.8 x 43 mm AISI410 stainless steel screws
- Borrow Torx TX20
- Self-drilling tip
- Drilling capacity in aluminium: 4 mm
- Drilling in hardwood with a density of up to 900 kg/m³
- Reduced 6 mm diameter head
- Black lacquer





AIRSPACER

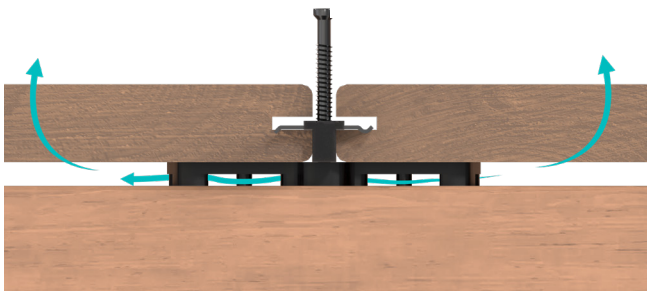
Installation & benefits



Cobra Airspacer **promotes ventilation** between the board and the joist without affecting the action of the fixing clip or the movement of the wood.

Its customised design fits perfectly under the honeycomb base of the Cobra Hybrid clips for **quick and easy installation**.

The Airspacer shim helps to limit the shearing effect on the fixing screw.



Code FR	Code NL	Code EAN	Qty/package	Weight (kg)
1040	2619	3700421810406	8	0,75

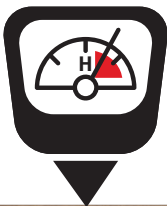


COBRA® HYBRID 8-25
Installation tips

SPACING REQUIREMENTS

Swelling / Maximum shrinkage

HUMIDITY
16% < H < 20%



6mm



KD WOOD (KILN DRIED)

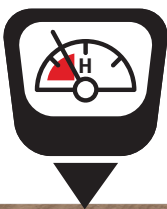


4mm



MAX SWELLING

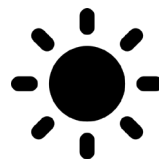
HUMIDTY
H < 16%



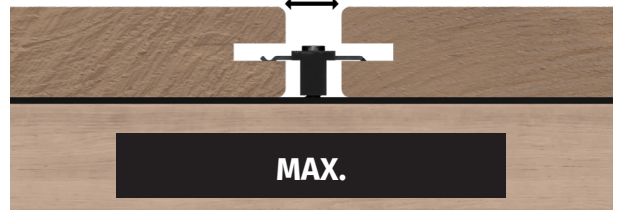
8mm



VERY DRY WOOD



13mm



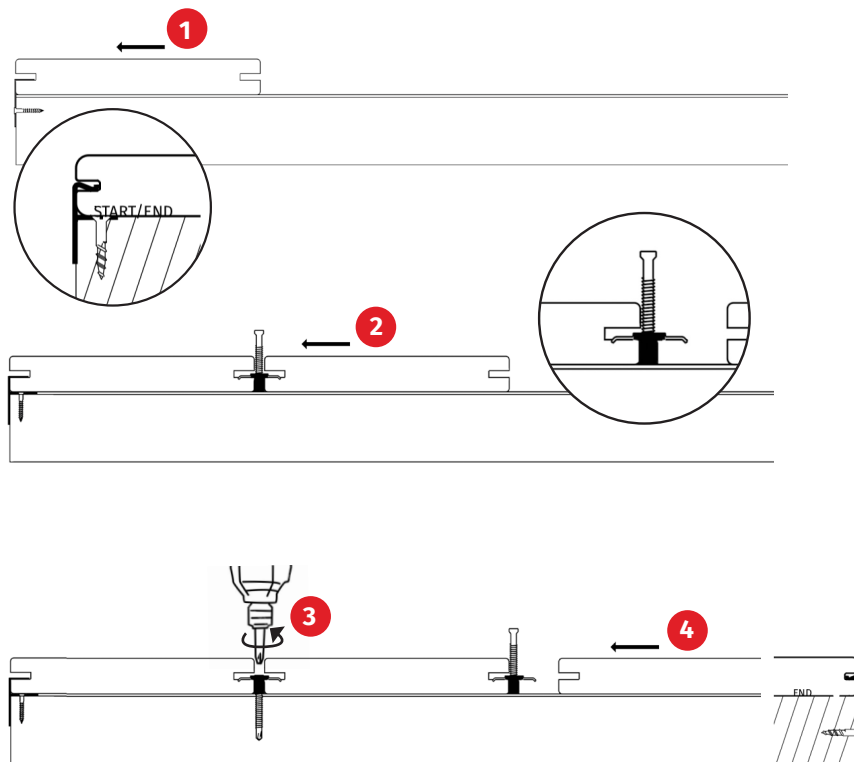
MAX.

MAXIMUM AUTHORISED SPACING :
13mm

Recommendations: Kiln-dried exotic timber, applied at a moisture content of around 18%.
Ipé, Padouck, Mukulungu (Afrikulu), Afrormosia, Louro Gamella (Tiara), Bamboo, Teak, Jatoba, Merbau, Garapa, Douglas fir, thermo-modified wood, Kebony, Accoya.

CLIP HYBRID 8-25

Installation

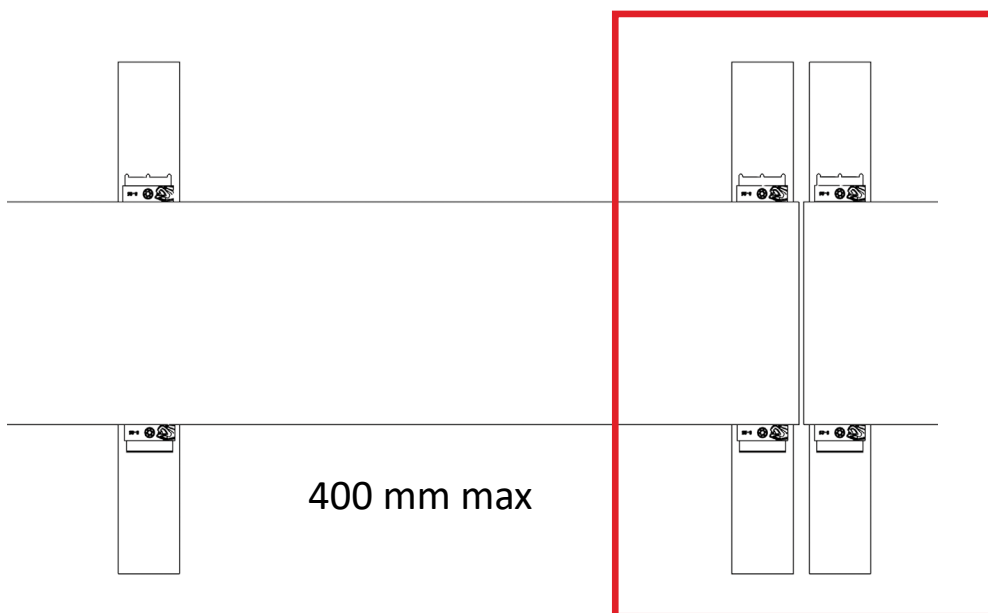


1. Fix the Start/End clips to the end of the joists, then insert the first board.
2. Insert the Hybrid clips in the board's groove without screwing them down, then place the next board in touch with the clip's base.
3. Screw on the Hybrid clips, while holding the boards on either side to ensure a perfect perpendicular fixing.
4. Repeat the operation and finish with the Start/End clip to fix the last board.



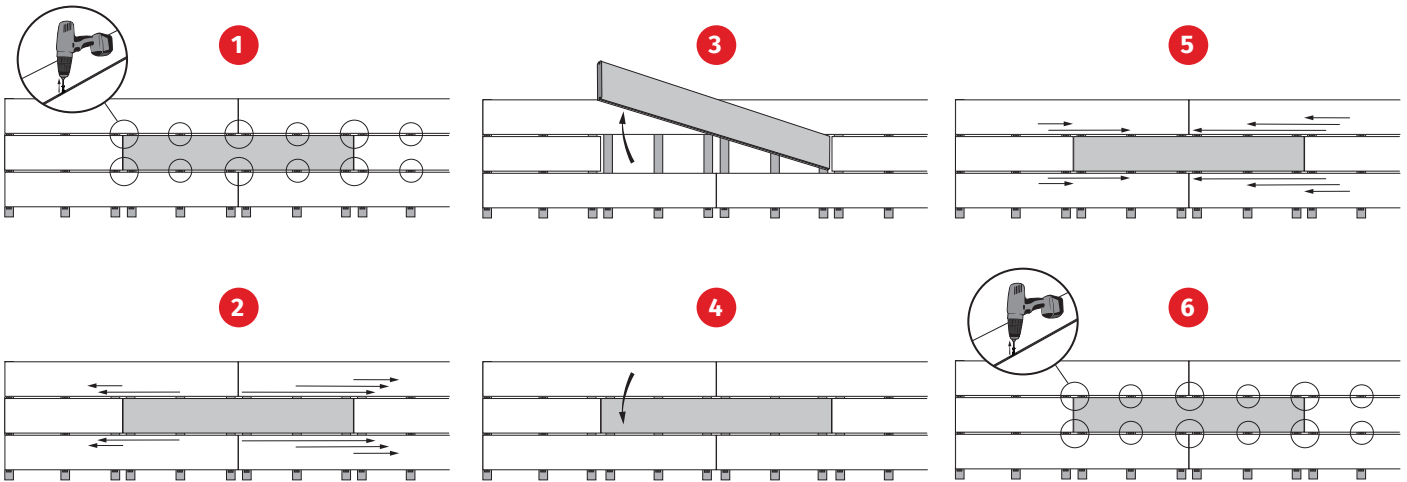
The use of clamps is highly recommended. It facilitates and optimizes the clips installation, enabling fast and precise screwing of several boards in a row.

Installation rules



Double joisting at the ends of the boards

Replacing a blade



1. Unscrew the clips

2. Spread the clips at the ends

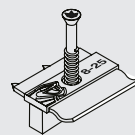
3. Remove the old blade

4. Position the new blade

5. Replace the clips

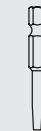
6. Screw on the new blade

Packaging



90 pcs

T 20



1 pc

± 3,2 m^{2*}

90mm

± 4,5 m^{2*}

120mm

± 5 m^{2*}

145mm

*Rating with a 40mm centre to centre joists distance

Code FR	Code NL	Code EAN	Qty/ package	Qty/pallet	Weight (kg)
0964	2662	3700421809646	8	512	1,05