



UNIVERSAL CLIP

**HYBRID**

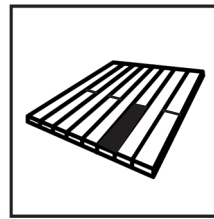
**7-22**

  
**COBRA** GLOBAL  
DECKING  
SYSTEM  
FASTENER®

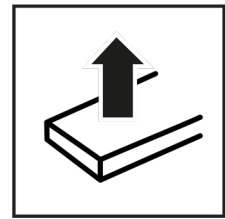


## CLIP HYBRID 7-22

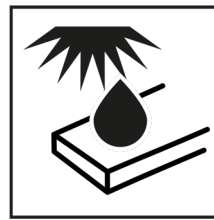
# The benefits



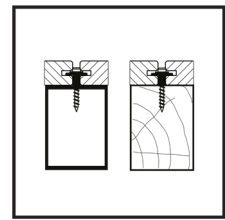
Can be dismantled locally



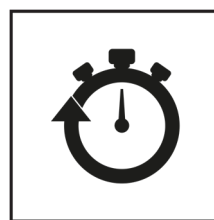
High tensile strength



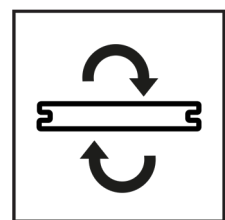
Absorbs decking movements



Fixing on wood and ALUMINIUM joists



Quick and easy to fit



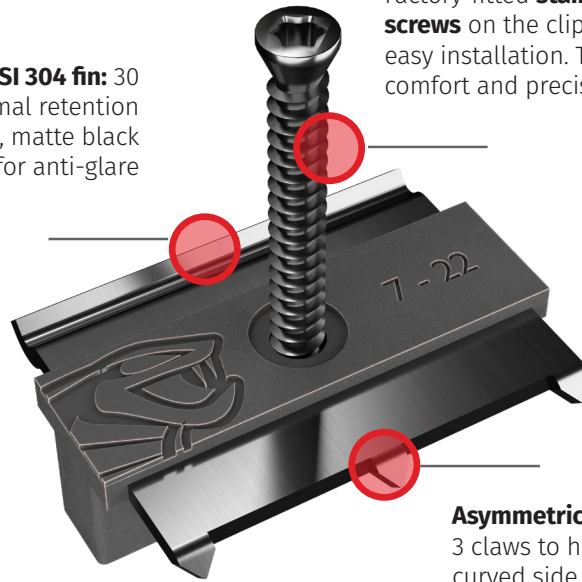
Compatible with reversible blades

# HYBRID 7-22, A BI-MATERIAL CLIP

## Exclusive & Innovative

**Stainless steel AISI 304 fin:** 30 mm wide for optimal retention and 1.2 mm thick, matte black lacquered for anti-glare

Factory-fitted **stainless steel screws** on the clip for quick and easy installation. Torx grip for comfort and precision



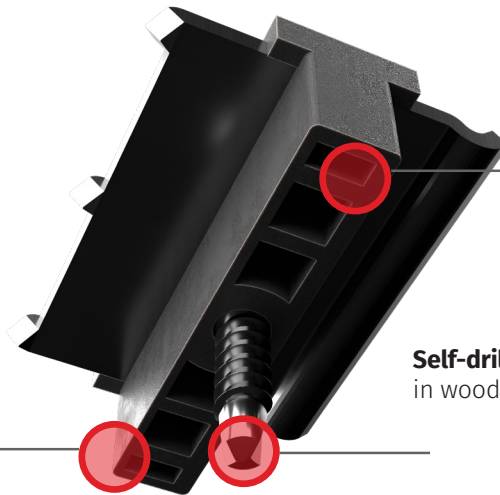
  
**CERTIFIED**  
22 160 820.1



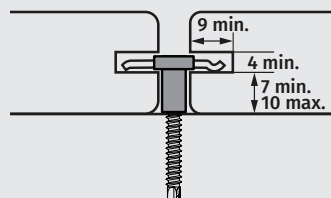
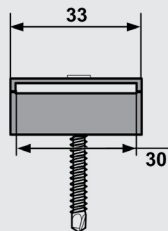
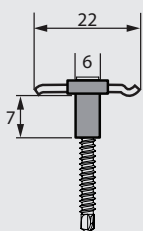
**Asymmetrical clip:** one side with 3 claws to hold the blade firmly, a curved side for easy positioning of the next board and allows the wood to expand

Black UV-resistant **polypropylene body**, 6mm wide, ensuring an appropriate and consistent spacing between the boards

**Honeycomb structure** absorbs deck movements



**Self-drilling point** for fixing in wood or ALUMINIUM

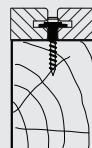


ALUMINIUM



Min thickness 2mm

WOOD



Max density:  
800 kg/m<sup>3</sup>

**COBRA® HYBRID 7-22**

Ideal for installation  
bamboo decking



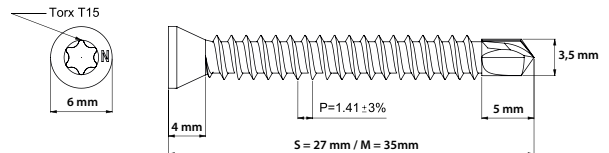
## HYBRID 7-22 S AND M CLIP SCREWS

# Screw characteristics



Inox AISI410

- AISI410 stainless steel screws 4.2 x 27 mm size S and 35 mm size M
- Borrow Torx TX15
- Self-drilling tip
- Drilling capacity in aluminium: 3 mm
- Drilling in hardwood with a density of up to 800 kg/m<sup>3</sup>
- Reduced 6 mm diameter head
- Black lacquer



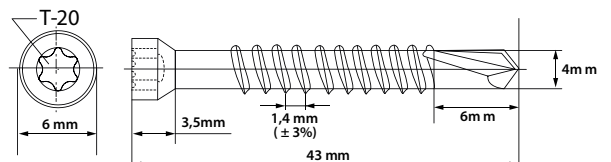
## HYBRID CLIP SCREWS 7-22 L

# Screw characteristics



Inox AISI410

- 4.8 x 43 mm AISI410 stainless steel screws
- Borrow Torx TX20
- Self-drilling tip
- Drilling capacity in aluminium: 4 mm
- Drilling in hardwood with a density of up to 900 kg/m<sup>3</sup>
- Reduced 6 mm diameter head
- Black lacquer





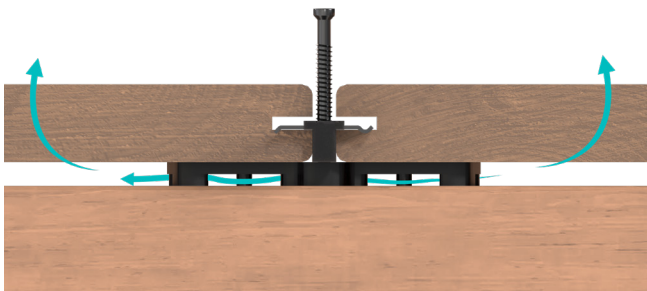
## AIRSPACER

# Installation & benefits

Cobra Airspacer **promotes ventilation** between the board and the joist without affecting the action of the fixing clip or the movement of the wood.

Its customised design fits perfectly under the honeycomb base of the Cobra Hybrid clips for **quick and easy installation**.

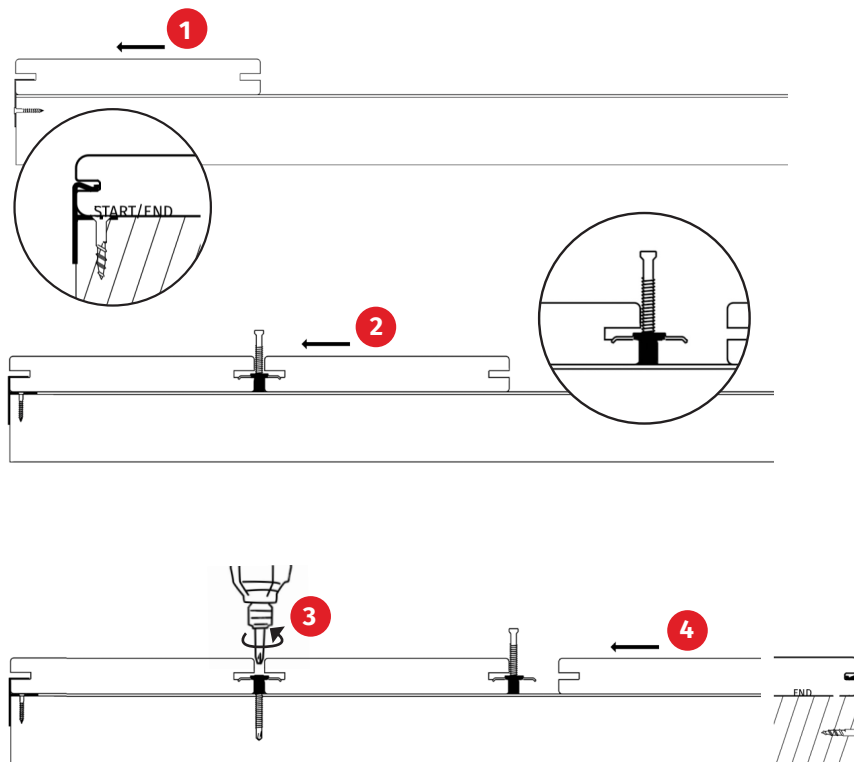
The Airspacer shim helps to limit the shearing effect on the fixing screw.



Code FR	Code NL	EAN code	Qty/package	Weight (kg)
1040	2619	3700421810406	8	0,75

## CLIP HYBRID 7-22

# Installation

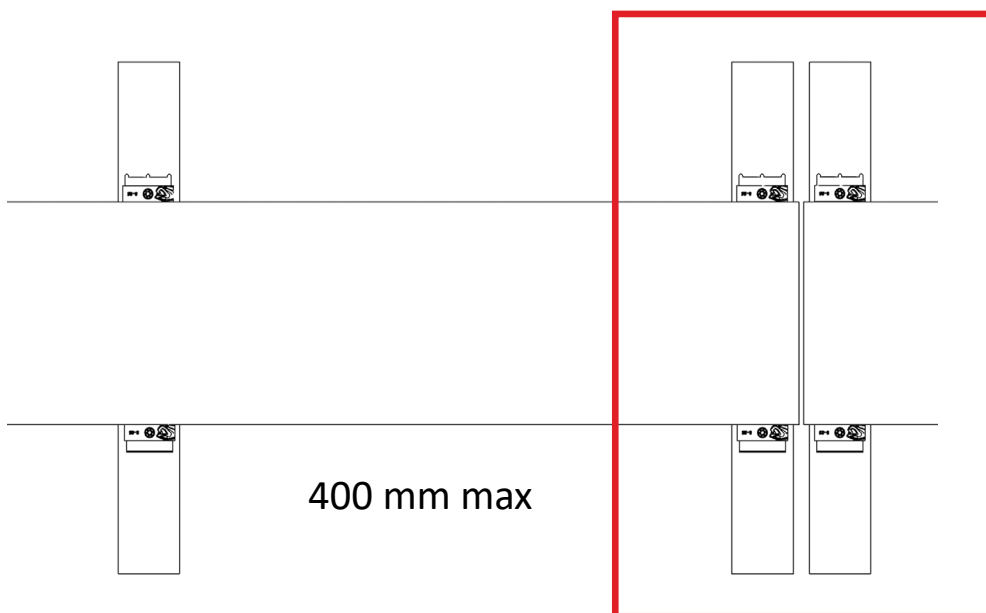


1. Fix the Start/End clips to the end of the joists, then insert the first board.
2. Insert the Hybrid clips in the board's groove without screwing them down, then place the next board in touch with the clip's base.
3. Screw on the Hybrid clips, while holding the boards on either side to ensure a perfect perpendicular fixing.
4. Repeat the operation and finish with the Start/End clip to fix the last board.



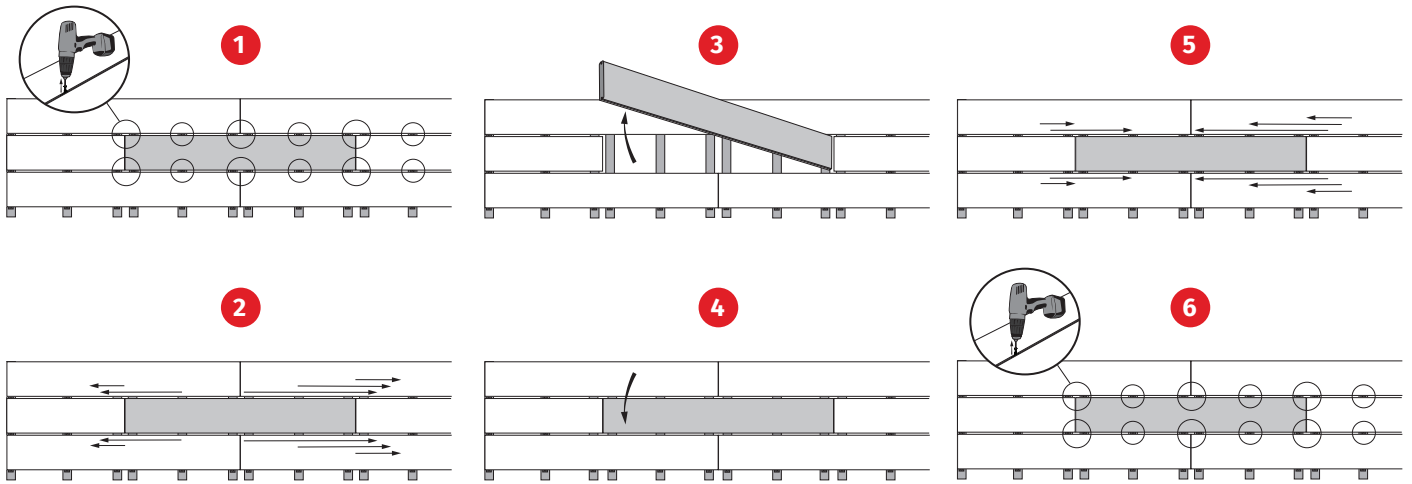
The use of clamps is highly recommended. It facilitates and optimizes the clips installation, enabling fast and precise screwing of several boards in a row.

# Installation rules



**Double joisting at the ends of the boards**

## Replacing a blade



1. Unscrew the clips

2. Spread the clips at the ends

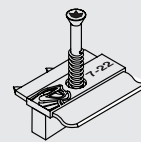
3. Remove the old blade

4. Position the new blade

5. Replace the clips

6. Screw on the new blade

## Packaging



90 pcs

T 15



1 pc

± 3,2 m<sup>2\*</sup>

90mm

± 4,5 m<sup>2\*</sup>

120mm

± 5 m<sup>2\*</sup>

145mm

\*Rating with a 40mm centre to centre joists distance

Sizes	Code FR	Code NL	EAN code	Qty/ package	Qty/pallet	Weight (kg)
7-22 S	FR2016	NL2920	3700421820160	8	640	0,88
7-22 M	FR1334	NL2661	3700421813346	8	640	0,88
7-22 L	FR1988	NL 2921	3700421819881	8	640	0,88